



Terms of Reference

Implementation Partnership for Employment Intensive Investment Programme (EIIP) Infrastructure Works in Kassala State (SDN/24/50/NLD)

Background and Introduction:

The PROSPECTS partnership for “Inclusive Jobs and Education for Forcibly Displaced Persons and Host communities in Sudan” is funded by the Government of the Netherlands in partnership with the IFC, ILO, UNHCR, UNICEF and the World Bank. The Programme supports host communities and forcibly displaced persons through interventions that promote protection and inclusion, learning, skills development, as well as access to livelihoods and economic opportunities. The Partnership aims to help transform the way governments and other stakeholders, including the private sector, respond to forced displacement crises – and in particular: (1) to enhance the enabling environment for the socio-economic inclusion of forcibly displaced persons; (2) to enhance access to education and child protection for vulnerable children on the move; and (3) to strengthen the resilience of host communities through inclusive socio-economic development that also benefits forcibly displaced persons.

Under Pillars 1, 2 and 4, the ILO’s Employment Intensive civil works programme will play a central role in employment creation, public asset creation, skills development and value chain strengthening in the targeted locations. The Partnership identified critical public assets, including water access points, schools/training centers, housing/shelter units and selected value chain strengthening initiatives for restoration, revitalization, and/or rehabilitation in targeted areas in Kassala state.

Kassala state is situated in the eastern part of Sudan. It borders Gedarif, Khartoum, River Nile and Red Sea states and shares international borders with Eritrea and Ethiopia. Its state capital is Kassala town. The main tribes in the state are the Bani Aamer, Handandawa, Nuba, Rashaida, Shawigaa, Jaleen, Husa, and Halfaween.

According to UNHCR, Kassala hosts the third largest refugee population in the country with over 116,000 refugees and asylum seekers taking refuge in the state around Shagrab camps. It is also a route for illegal human trafficking and migrant movement from Ethiopia and Eritrea to Europe.

Since the outbreak of the conflict in April 2024, over 264,000 refugees and asylum seekers living in Sudan have been secondarily displaced. The refugees hosted in Sudan mainly come from South Sudan, Eritrea, Syria, and Ethiopia, as well as the Central African Republic, Chad and Yemen, with 32% of the population living out of camps and 68% settled in them. Since the outbreak of the conflict, Sudan has kept its border open to new refugees arriving from Ethiopia and Eritrea (an estimated 13,667 have sought asylum in the country since the start of the conflict in April 2023). Kassala state still receives additional refugees and asylum seekers who have been adversely impacted both by the conflict and by extreme weather events linked to climate change, including floods and drought which destroy crops and livestock, and are likely to increase in frequency and severity.

EIIP Methods

The EIIP works entail employment-intensive and local resource-based approaches to produce public assets in a range of sectors such as road construction and maintenance, water and drainage, irrigation infrastructure, and soil conservation. The EIIP approach offers a cost-effective solution to deliver to rural community's access to water and health facilities while generating a high demand for labour during implementation. It is of paramount importance therefore to demonstrate the viability of the approach through actual implementation and delivery of the priority infrastructure assets identified by the ILO in consultation with the local stakeholders. The ILO's interventions thus aim to maximize labour intensity (i.e. the ratio of labour inputs in comparison to capital inputs) of the infrastructure rehabilitation works without compromising technical standards. Through the approach, the intervention can equally generate much needed income, job, and skills development opportunities to as many project beneficiaries as possible.

Overall Objectives:

The main objective of this TOR is to contract an implementing partner to implement and supervise the EIIP projects/contracts to be undertaken by local contractors in the targeted localities in Kassala State and collaborate with TVET institutions/experts to deliver skills development training in the project sites. The bidding for these projects will be open for local contractors who are based and holds active registration documents in Kassala state.

The ILO PROSPECTS Sudan has identified and selected the projects that will be implemented in Kassala state. The selected projects are: **construction of latrine units and shelters/housing units in Shagrab camp and host community areas around it.**

The implementing partner is entrusted with the responsibility for the overall implementation and supervision, including conducting tendering process (targeting locally based contractors in Kassala state), site supervision, progress reporting, payment transactions, test of materials, coordination with TVETs or TVET experts for skills training delivery and all that is necessary for successful completion of the assignment. The bidder shall prepare its detailed budget for provision of the described services as part of the financial proposal.

The Implementation Partnership pertains to the construction and contracts management for all EIIP worksites. Under this, the implementing partner will be expected to substantively engage with the local Economic Development Committee (LEDC). The LEDC is comprised of technical representatives from the key institutions at state level (locality administrations, line ministries, Commission of refugees-COR, the State Council of Vocational Training and Apprenticeship (STCVTA) UNICEF, UNHCR, and the ILO) to steer and advise on the implementation of the various EIIP projects being undertaken by the local contractors in the state while the STCVTA will ensure skills dimension are implemented in accordance with set curriculum and possible certification pathways. As part of the Implementation, the partner is expected to coordinate with relevant TEVT authorities to assess and certify the skills of the workers on the EIIP sites and facilitate the issuance of assessment and certification certificates to the workers, based on their competence and trade test conducted.

On the skills development training, the implementing partner should coordinate and work closely with the selected TVET institute and TVET experts in Kassala state. The ILO will be responsible for selecting the TVET institute/TVET experts and linking them with the implementing partner while the STCVTA will ensure skills dimensions are implemented in accordance with set curriculum and possible certification pathways.

Specific tasks will include the following:

- 1) Conduct tendering process for the locally based contractors and prepare the contract documents for the EIIP worksites in liaison with the ILO, ensuring that relevant clauses on decent work requirements are adequately captured.
- 2) Assign contract packages to the local contractors in a transparent manner and sub-contract the EIIP contractors that will execute works within the stipulated scope of work and budget presented in the BOQs and hand over the sites to the contractors.
- 3) Support the selected local contractors in drafting and executing any sub-contract works that they may need to enter into for effective delivery of the project.
- 4) Developing work plans with the selected contractors in line with activities specified in each BOQ.
- 5) Coordinate with the STCVTA and TVETs to provide onsite skills development trainings for workers, in the form of skilling for casual workers and upskilling programmes for skilled workers to supervisory roles through informal apprenticeship programmes.
- 6) Coordinate with relevant TEVT authorities to assess and certify the skills of the workers on the EIIP sites and facilitate the issuance of assessment and certification certificates to at least 70% the workers, based on their competence and trade test conducted.
- 7) Monitoring of the selected contractors (and their sub-contractors) on site in their application of the EIIP methodologies as per the contract documents, including that of Occupational Safety and Health (OSH) standards, as well as other social and environmental safeguards as specified in the contract template (to be agreed between the ILO and the implementation partner).
- 8) Collect data in formats agreed with ILO related to the works in each of the EIIP worksites including the following:
 - I) Number of workers recruited, disaggregated by the ratio between host communities and forcibly displaced persons (FDPs), occupation, age, and gender. The project aims to recruit and create 380 job opportunity by the end of this contract.
 - II) Number of total workdays generated through the work, disaggregated by the ratio between host communities and FDPs, occupation, age, and gender. The project targets to create 2,500 workdays by the end of this contract.
 - III) Number of workers skilled on the job per occupation, disaggregated by the ratio between host communities and FDPs, occupation, age, and gender. The project targets assessment and certification of 70% of the workers based on their competencies and trade test conducted
 - III) Total wages paid to workers, disaggregated by the ratio between host communities and FDPs, occupation, age, and gender.
 - IV) Workers' selection modalities, including the number of applicants.
- 9) Approve works done to specifications and process payment to the local contractors and ensuring timely payment to workers contracted through the contractors.
- 10) Prepare and submit in a timely manner narrative and financial expenditure reports according to the specified schedules. The narrative report shall include information on the data sets and disaggregated as stated above.

Key Deliverables:

Key deliverables are detailed below:

Deliverables	Duration
Deliverable-1: Inception report: Contains the signed contracts between the implementing partner and the selected contractors (and any sub-contracts), work plans for each work site in line with BOQs, as well as the numbers and list of workers to be recruited and linked with the TVET institutions/TVET experts for the skills development training and their assessment and certification and the selection modalities	After 20 days after the signing of the contracts.
Deliverable-2: 1st progress report: Narrative and financial report that contains worksite progress in percentage against activities specified in each BOQ, work plans, and budget delivery, and number of workers received skills training disaggregated by occupation. This deliverable and report should include an update on the selection of a TVET Partner to conduct the assessment and certification of the skills of the workers.	After the average of total works on sites reaches 40%.
Deliverable-3 2nd progress report: Narrative and financial report that contains worksite progress in percentage against activities specified in each BOQ, work plans, and budget delivery, and number of workers received skills training disaggregated by occupation.	After the average of total works on sites reaches 80%.
Deliverable-4 Final report: Narrative and financial report that contains all the required data specified in the TOR and expenditure summary report. This final report should include details on the number of workers whose skills have been assessed and certificated based on the various occupations.	After 10 days after the final handover of projects to the local community and stakeholders

Reporting Lines:

The implementing partner will be under the general supervision of the PROSPECTS Sudan Programme Manager and under the direct supervision of the EIIP Specialist in the ILO's Country Office Addis Ababa. The implementing partner will get technical guidance and work in close consultation with the PROSPECTS' national EIIP Engineer.

The ILO will provide support in the design of the work plans with provision of work standards, contract templates, work plan templates, and testing of materials if needed.

Qualifications and Competencies:

The bidders shall meet the following minimum requirements (compliance to be clearly captured in the proposal):

- International NGO (INGO) or national NGO registered in Kassala State with valid registration certificate (please provide copy of valid registration certificate).
- Has been operating in the Kassala State for at least three years.
- A minimum of three years' experience in WASH and buildings rehabilitation/construction works.
- Able to successfully implement contracts of at least USD 500,000 each annually (please attach at least two project completion certificates in the last five years).
- Management and technical capacity to implement similar infrastructure works (please attach CVs of **four key staff** for the project:
 - **2 technical experts (civil engineer/Architect) at field level.**
 - **2 home officer (State and Head office) supervisors.**
 - Staff costs for the personnel other than the proposed four key staff should be limited to essential technical and administrative support staff costs quoted in percentage. Please note that an important element of the assessment is competitiveness of the financial offer.
 - Technical experts should demonstrate a minimum of four years of experience in managing infrastructure projects in the construction and WASH sectors.
 - Home office (HQ) supervisor should demonstrate a minimum of seven years of progressively responsible experience in the implementation of infrastructure projects in the construction and WASH sectors.
- Experience working with government departments, UN agencies and other international organizations.
- Experience working in humanitarian/refugee settings will be an added advantage.

Evaluation Criteria:

The selection of the bidder shall consider the bidder's: (i) **technical expertise**; (ii) **financial capacity to carry out the programme/project activities and/or produce the outputs, and manage the funds entrusted to them**; and (iii) **the financial proposal**.

Only technically compliant bidders (minimum score 60 points) are allowed to proceed to the final stage of financial comparison. At the final stage, the most cost-effective submission shall be selected.

Evaluation Criteria	Maximum mark
Qualification of key experts (2 technical staffs and 2 head office supervisors)	26 points
Technical Staff: -	7 points
- Bachelor's degree in civil engineering/architecture (7 points) .	
- A minimum of five (5) years of experience in construction sector, site management/supervision and as a team leader in at least one of the past assignments (4 points) .	4 points
- Previous experience in labour-based construction projects. (2 points)	2 points
Head office supervisors: -	7 points
- Master's degree in development studies/civil engineering or relevant field (7pts)	
- A minimum of ten (10) years of experience in infrastructure development projects, tendering/contracts management and as supervisor in at least three of the past assignments (4 points)	4 points

- Previous experience supervising a labour-based construction project. (2points)	2 points
A minimum of three years' experience in WASH and buildings rehabilitation/construction works. (attach completion certificates and references)	25 points
Proven previous experience working with government departments, UN agencies and other international organizations (particularly in Kassala state).	4 points
Previous experience of labour-based projects <ul style="list-style-type: none"> • 2 projects = (10 points) • Any additional project (5 points) 	15 points 10 points 5 points
Description of the methodology, work plan, and the management/technical capacity for performing the assignment highlighting the ability to successfully implement and manage contracts of at least USD 500,000 (attach completion certificates and references).	30 points
Description of proposed methodology and work plan	15 points
The ability to successfully implement and manage contracts of at least USD 500,000	15 points
Total Points	100 points
Minimum Acceptable Score for Proposal to be considered for financial evaluation.	60

Payment Schedule:

This assignment will be implemented within a period of up to 6 months, ending no later than **31st December 2025**. The bidder in its technical proposal shall include a detailed work plan for the overall management of the tasks outlined in the TOR.

Payment and financial resources will be released upon submission of the below reports:

- (10%) as a first payment after submission of Deliverable-1 (Inception report).
- (30%) as a second payment upon timely submission and approval of Deliverable-2 (1st progress report).
- (55%) as a third payment upon timely submission and approval of Deliverable-3 (2nd progress report).
- (5%) as a fourth payment upon timely submission and approval of Deliverable-4 (final report) and final handover of the project sites to be inspected by the ILO.

INSTRUCTIONS TO BIDDERS

Interested bidders shall submit a technical and financial proposal. The technical proposal shall demonstrate the bidder's capacity to successfully carry out the assignment, including its previous experience in similar works as well as management and technical ability. The technical proposal should also indicate how the bidder intends to undertake the activities, summary of similar projects and work done in the past, and the proposed workplan. Certificates of registration, CVs of the proposed staff, completion reports of previously executed projects should be included in the technical proposal.

The financial proposal should be submitted in USD and should include all envisaged costs, tabulated as below:

No.	Deliverables	Price (USD)
1	Deliverable-1 Inception report: Contains the signed contracts between the implementing partner and the selected contractors (and any sub-contracts), work plans for each work site in line with BOQs, as well as the numbers and list of workers to be recruited and linked with the TVET institutions/TVET experts for the skills development training and their assessment and certification and the selection modalities	
2	Deliverable 2: 1st progress report: Narrative and financial report that contains worksite progress in percentage against activities specified in each BOQ, work plans, and budget delivery, and number of workers received skills training disaggregated by occupation. This deliverable and report should include an update on the selection of a TVET Partner to conduct the assessment and certification of the skills of the workers.	
3	Deliverable 3: 2nd progress report: Narrative and financial report that contains worksite progress in percentage against activities specified in each BOQ, work plans, and budget delivery, and number of workers received skills training disaggregated by occupation.	
4	Deliverable 4: Final report: Narrative and financial report that contains all the required data specified in the TOR and expenditure summary report. This final report should include details on the number of workers whose skills have been assessed and certificated based on the various occupations.	

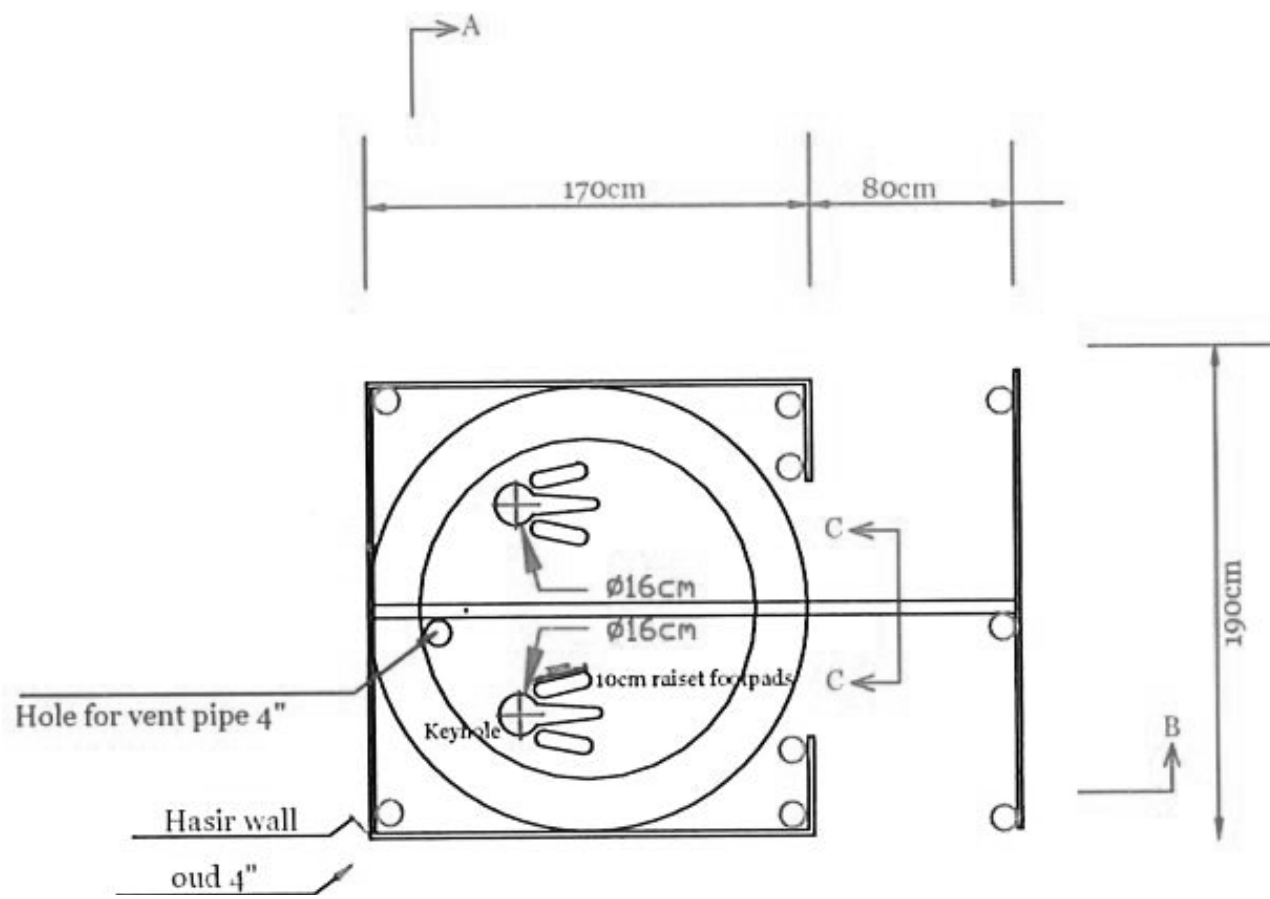
Breakdown of cumulative cost per staff:

Deliverable	Experts/activity	Number of Day	Rate	Amount

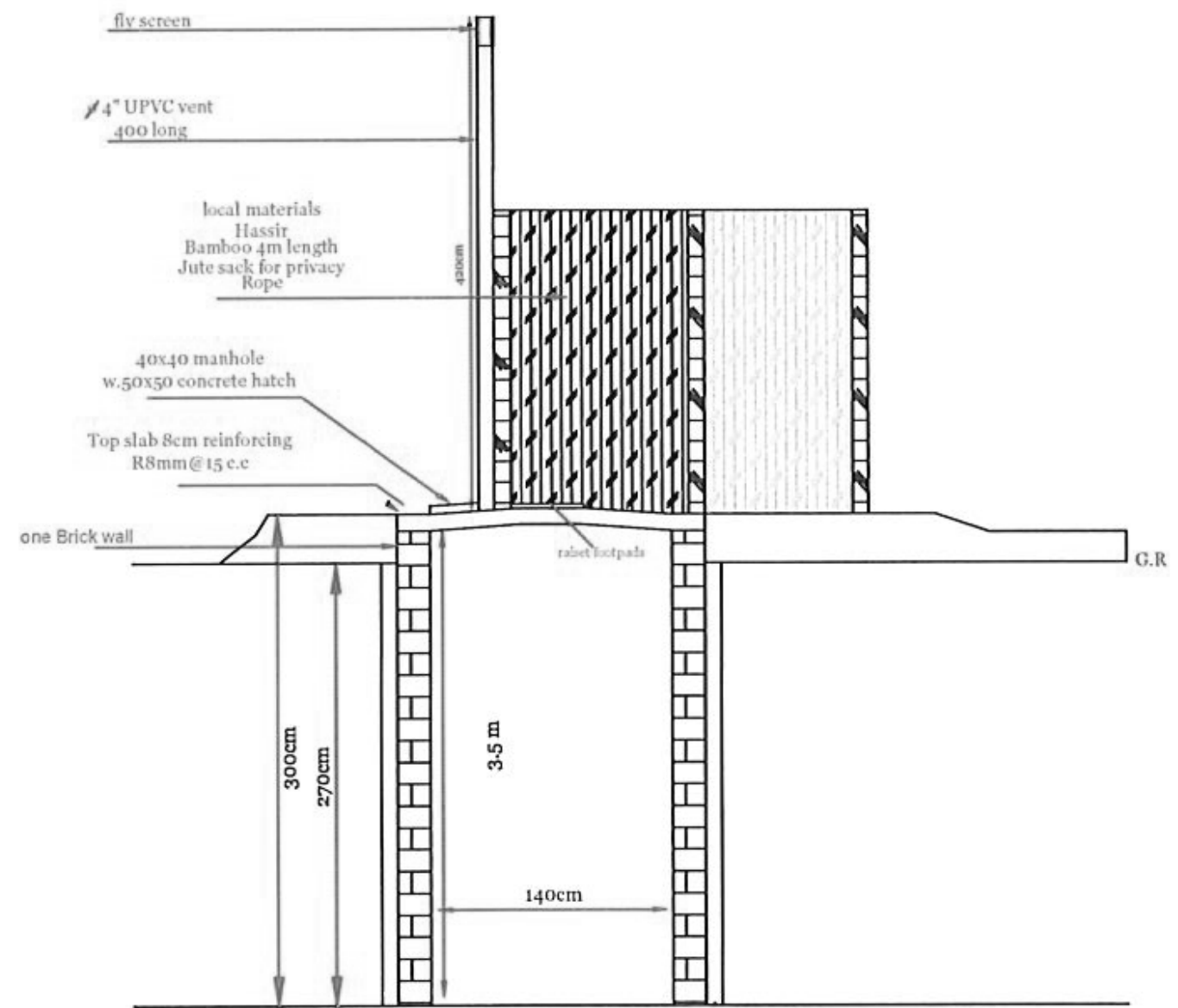
Sub-total				
Sub-total				
Sub-total				
Total				

SUBMISSION OF PROPOSALS

Interested bidders should send their technical proposal and financial proposal to addis_procurement@ilo.org no later than **03 July 2025**. Requests for documents as well as questions related to the assignment can be submitted to addis_procurement@ilo.org by **22 June 2025**. All candidates will receive a response latest by **26 June 2025**.



Plan
Scale 1:120



Section
Scale 1:120

NOTES:

NOTE:
Approved Design By
SMOH

KEY PLAN

4		
3		
2		
1		
0		
No.	Description:	Date

Revisions

PROJECT TITLE:

Technical design and monitoring
for the ILO's Employment
Intensive Investment Programme
(EIIP) Infrastructure Projects in
Kassala and White Nile - White
Nile

CLIENT:



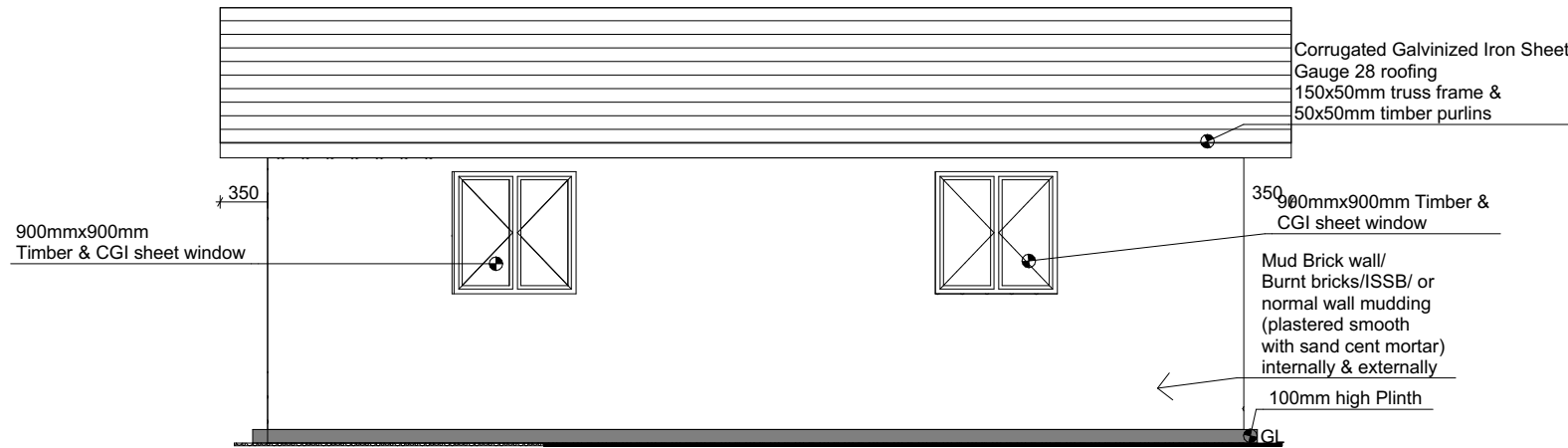
CONSULTANT:

Abbas Abdalwahab Abdulraheem
Abdalla

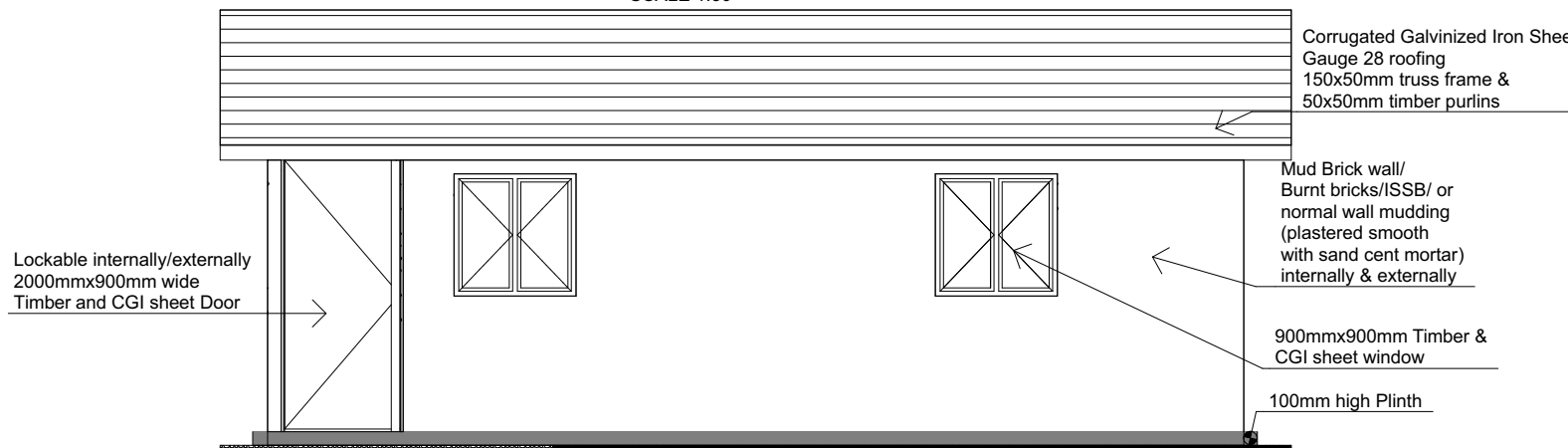
Drawing Title:

Typical House Hold
Latrines design
(2 Family Shared latrines)

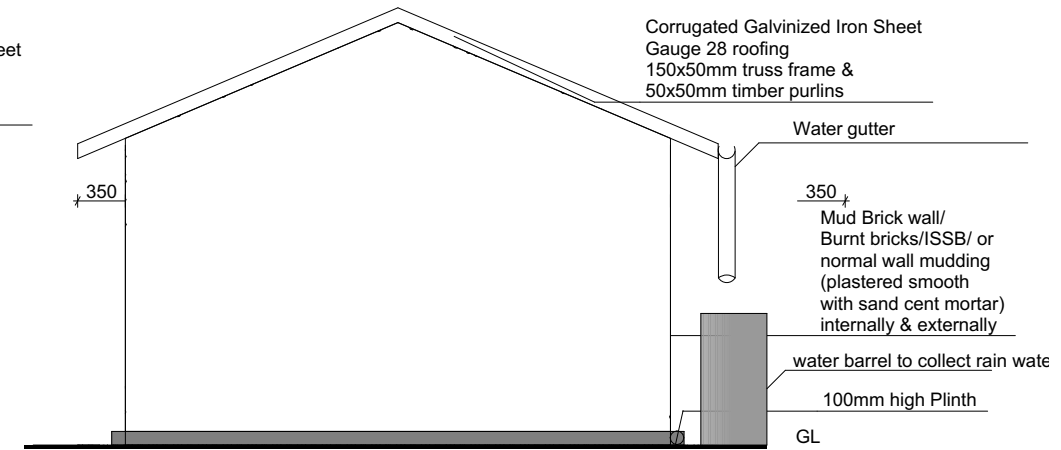
Org. Sheet Size:	Date: May-2025	
A3	Scale: 1:120	
Project No. PO# 40503635	Sheet No. A.01.09	Rev. No. 0



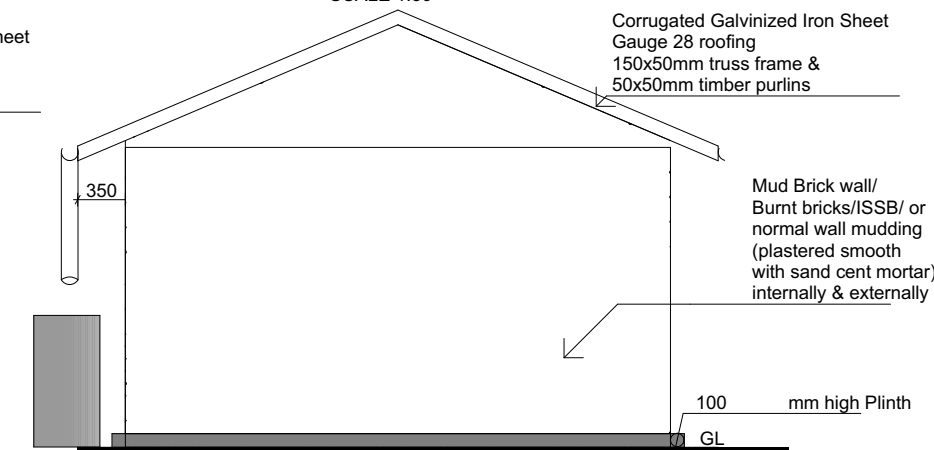
ELEVATION 3
SCALE 1:50



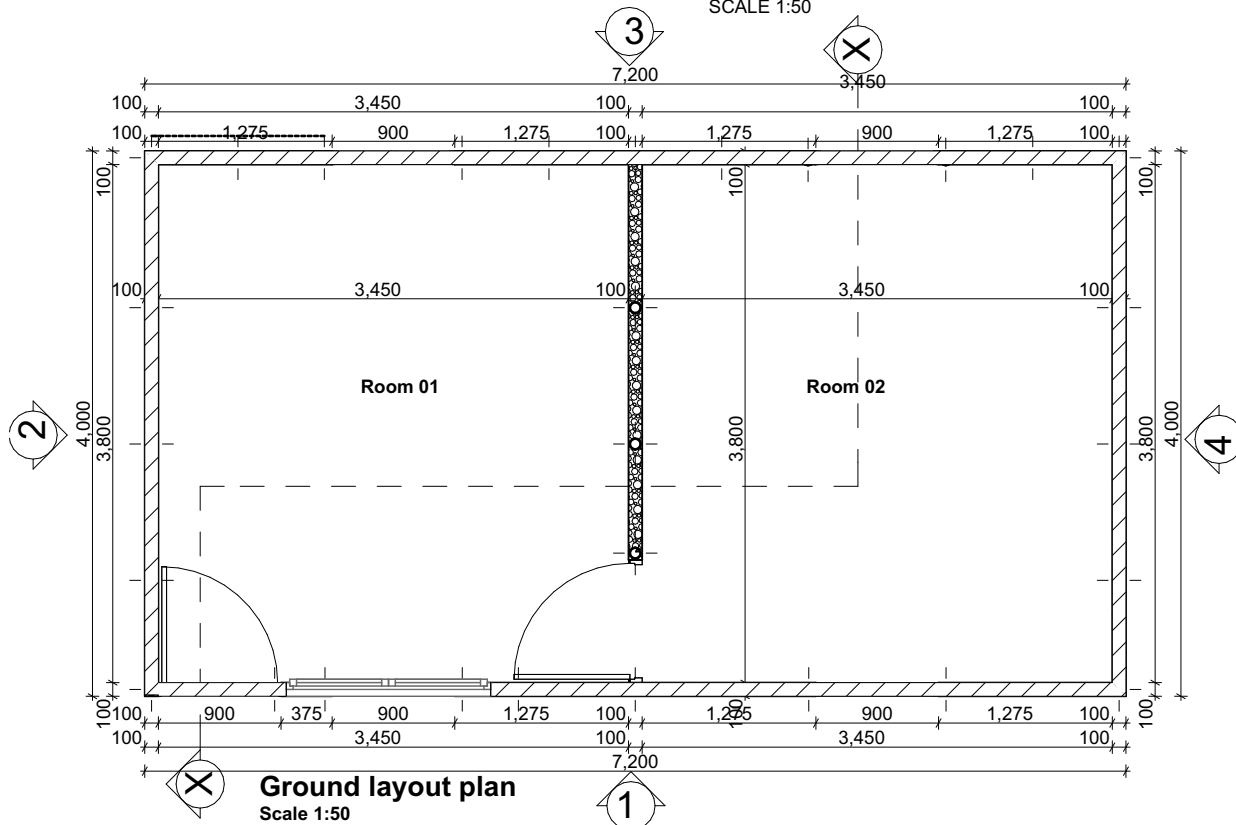
ELEVATION 1
SCALE 1:50



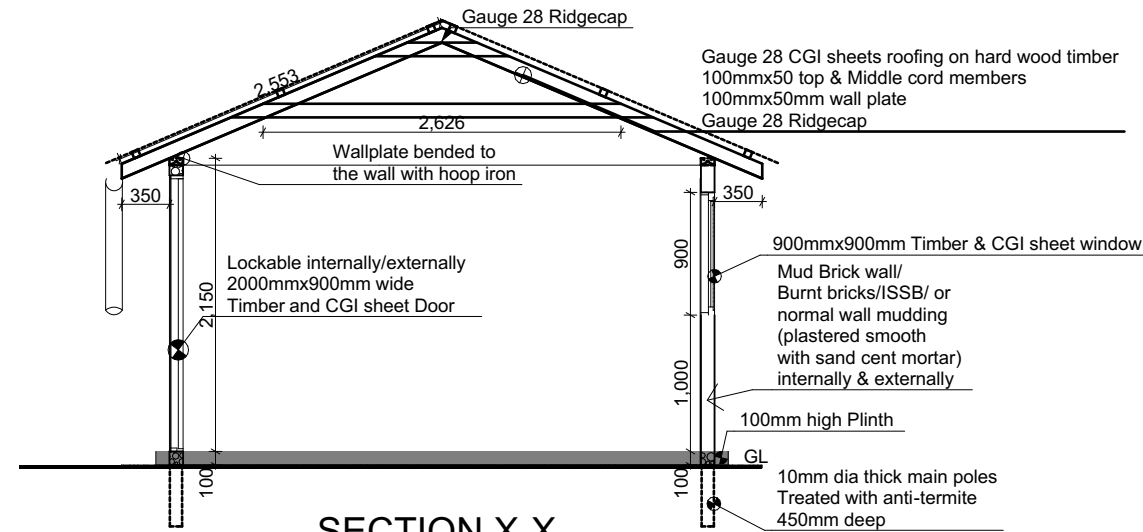
ELEVATION 4
SCALE 1:50



ELEVATION 2
SCALE 1:50



Ground layout plan
Scale 1:50



SECTION X-X
SCALE 1:50

NOTES :

KEY PLAN

Drawn	Chkd.
-------	-------

4		
3		
2		
1		
0		
No.	Description:	Date

Revisions

PROJECT TITLE:

National Consultant to provide technical design and monitoring for the ILO's Employment Intensive Investment Programme (EIIP) Infrastructure Projects in Kassala and White Nile - White Nile PO#40503635

CLIENT:



CONSULTANT :

Abbas Abdalwahab Abdulraheem Abdalla

Drawing Title:

Typical Shelter Design

Org.Sheet Size:	Date: May-2025	
A3	Scale: 120	
Project No. PO# 40452947	Sheet No. A.01.10	Rev. No. 0

PROSPECTS SUDAN					
1	All the works are in accordance with approved Technical Specification and the instructions of the Supervising Engineer or proxy for these construction works;				
2	All materials must be NEW from best type in market and approved by Supervising Engineer or proxy;				
3	All construction materials should be approved in accordance with the agreed upon service requests, task/works specifications, and equipment used in transport of materials is operated in compliance with the manufacturers operational parameters;				
4	All the items include provision of all necessary materials and installation/commissioning-related works				
5	All phases of work should be approved by the Supervising Engineer before moving to next phase of the work schedule;				
6	Awareness-raising posters regarding safety on site shall be displayed throughout the construction site				
7	Technical and construction-related questions as well as addressing any quality issues related to expected works are to be directed to the Supervising Engineer for resolution; and final technical decision.				
8	Supervising Engineer and the Client require regular photo report of work conducted to date. These photo reports will be used to track progress against the agreed upon Scope of Work and Bill of Quantities documents for the project				
PROSPECTS SUDAN: Preliminaries BOQ					
Item	Description	Unit	Qty.	Unit Cost SDG	Total Cost SDG
1	Preliminaries / Site Prep				
1-1	Site Preparation: This site will need to be cleared of all rubbish, bushes, and materials. Remove any obstacles to the safe access of construction workers is also to be planned for; including any buried materials that will interfere with the establishment of the various civil works. All initial site preparation, clean-up and removal of materials to be conducted to the instructions of the site manager and the approval of the Supervising Engineer.	Lump Sum	1.00		
1-2	Electrical, Water supply and Running cost: The Contractor shall establish and commission an adequate temporary electrical and water supply for the works, suitable for all purposes, until handing over and shall pay all charges for all electrical and water consumption. Including any necessary cables, generators, MDBs, water pumps, water storage tanks, distribution pipe network, etc. required for the execution of the works. Running costs, price includes; Power & services, water, documents, photos, records, and Client meetings on site.	Lump Sum	1.00		
1-3	Sign Boards: The Contractor shall establish and maintain One (1) sign boards for the Site (1.5 m width X 2m height), total height of sign board is 3 m, consisting of painted galvanized steel board plate, steel tubular section, steel angles, all painted with two coats white oil paint back and front and supported above the ground with steel framing and struts painted matt black and set into the ground and fixed in concrete foundation size (10 x 10 x 10). The sign board shall be lettered by a skilled sign writer in Arabic and English and shall include: The Project details, specific mention of The ILO and the Ministry of Foreign affairs for the Kingdom of Netherlands, Implementing partner, and Contractor's Name. Large scale layouts are to be submitted to the Supervising Engineer for approval before manufacture. No advertising material other than this will be permitted. No other sign boards or advertisements on or around the site will be permitted unless approved by the Supervising Engineer.	Lump Sum	1.00		
1-4	Cleaning the Works: Immediately prior to handing over the Works the Contractor shall thoroughly clean all project site area, remove material and generally keep the area ready for operation and use all to the approval of the Supervising Engineer.	Lump Sum	1.00		
1-5	Temporary Sanitary Facilities: The contractor shall establish basic worksite services including all temporary separate sanitary facilities for men and women that are sufficient in number and conveniently and safely located (mobile sanitary facilities could be considered).	Lump Sum	1.00		
1-6	PPE & OSH: The contractor should design and install all worksite safety and personal protective equipment requirements signage. In addition to all work and occupational safety signs all around the site. Safety and Health provision, traffic barriers at site limit, safety gears for all laborers , proper tools and PPEs (including COVID-19 prevention measures). Safety equipment, hazard & traffic management, safe-working requirements, health/safety records & analysis, supervision & training, induction, protective clothing; & the like; Site bins and cleaning.	Lump Sum	1.00		
1-7	Insurance payment: The contractor should provide and pay for accident and liability: workman's compensation, Liability insurance and third party. This amount will be paid to the contractor upon submission of payment receipt to the relevant authorities.	Lump Sum	1.00		
1-8	Materials Storage and Site office: The Contractor shall provide and maintain temporary storage and site office made of zink sheets and steel pipes fixed on reinforced concrete slab and use it as materials storage (cement and other perishable materials and the like) and site office for regular meetings. Contractor should also provide chairs and tables for regular site meetings.	Lump Sum	1.00		
1-9	Shop Drawings: The Contractor shall provide at any time before commencement or during the progress of the work shop drawings as directed by the Supervising Engineer. Shop drawings should also be provided for activities related with assembly such as water tank installation, solar system installation, and generator anchoring.		NOTE		
1-10	As-Built Drawings: The Contractor shall carry out the correction of all prints of Drawings including the preparation on completion of the Works. One softcopy (CD or DVD) and One colour printed of As-Built Drawings		NOTE		
1-11	Samples: The Contractor shall allow for providing and submitting to the Supervising Engineer as he may require, samples of all materials and goods which the Contractor proposes to incorporate into the works		NOTE		
1-12	Site Visit: All Contractors/bidders are strongly advised to visit the proposed sites prior to pricing and submitting bid offers. Contractors/bidders shall coordinate with the Client and Supervising Engineer to obtain information about the locations/coordinates of the proposed sites and arrange at their own costs site visits to determine the conditions of the water boreholes facilities, rehabilitation needed, material storage area and material delivery arrangements. Contractors/bidders are solely responsible for that and no price increase shall be made later on during the project period in case of		NOTE		
1-13	All items identified as (NOTE) are included for clarification purposes and should not be priced, price should be included in the related items.		NOTE		
1-14	Complete Project Price: This BOQ is part of the complete project documents (drawings, BOQ, and materials specifications and notes on pricing) and must be read together. Any discrepancies between these documents shall be brought to the immediate attention of the Supervising Engineer. Prices given by the contractor on this BOQ are to cover any and all additional materials, labour or associated costs to complete the works as documented on the complete project documents.		NOTE		
Sub-Total - SDG				SDG	-
Sub-Total - USD					\$0

Technical design and monitoring for the ILO's Employment Intensive Investment Programme (EIIP) Infrastructure Projects in Kassala and White Nile States- PO#40503635					
BoQ for Construction of House Hold Latrines at Shagarab					
Annex 1-BILLS OF QUANTITIES					
Item	Description	Unit	QTY	Rate SDG	Amount
1	EXCAVATION AND DISPOSAL				
	Excavation starting from existing ground level including leveling and ramming bottom, and removal of surplus excavated material up to 1m distance from cleared site				
1.1	Excavation and removal of surplus material in pits an area of Clear area circular pit latrine diameter 2m×4m depth	m3	13		
2	BACK-FILLING AND COMPACTION				
	Supply and backfill in selected fill material in 10 cm successive layers each layer watered and well-compacted.				
2.1	Backfill around pit external walls; 4 m depth and 0.10m width use sand soil	m3	8		
3	Provide and Backfill around latrine use selective soil	m3	8		
4	MASONRY WORKS				
3.1	Provide and build one brick Walls (1:8) cement sand mortar, 4 m height; 200mm Thick as per drawing	m2	25		
4	REINFORCED CONCRETE				
	Supply and cast Reinforced Concrete; Grade 25N/mm², rate to include forms, shuttering, scaffolding, and reinforcement:				
4.1	Provide and cast reinforced concrete slab, 10 cm thick; size 2.2m The price and steel bar 12 mm @15 cm c/c to include provision for pit openings, all as detailed in the drawings.	m3	0.4		
4.2	Lid for the drop-hole	No	2		
5	SANITARY WORK				
5.1	Supply and install 4" PVC Vent pipe as per drawing 4.0ml each including wire mesh cap to the exterior end of the vent pipe	No	1		
5.2	Supply and install removable concrete covers size 40cm x 40cm for external drains as per drawings; 8cm thick and including hanger edge angles	No	1		
6	SUPER-STRUCTURE				
6.1	Provide and construct superstructure from Grass sheet (Hassir) dimension 2mx1.8m	pc	8		
6.2	Provide and fixing of Bamboo 4m length	pc	8		
6.3	Provide and fixing of wooden Poles	pc	6		
6.4	Provide and fixing of Plastic sheet on the fence 4mx6m and print the logos.	pc	2		
6.5	Rope	Roll	1		
Sub-Total for 1 HH Latrine SDG					0
Total Amount for 50 HH Latrines (SDG)					0
Total Amount for 50 HH Latrines (USD)					0

Total Cost of BOQs		
#	Description	Cost USD
1	Preliminaries	0
2	Construction of 50 HH Latrines	0
	<u>Total BOQs Amount for</u> <u>construction of 50 HH latrines</u>	<u>0</u>

PROSPECTS SUDAN					
1	All the works are in accordance with approved Technical Specification and the instructions of the Supervising Engineer or proxy for these construction works;				
2	All materials must be NEW from best type in market and approved by Supervising Engineer or proxy;				
3	All construction materials should be approved in accordance with the agreed upon service requests, task/works specifications, and equipment used in transport of materials is operated in compliance with the manufacturers operational parameters;				
4	All the items include provision of all necessary materials and installation/commissioning-related works				
5	All phases of work should be approved by the Supervising Engineer before moving to next phase of the work schedule;				
6	Awareness-raising posters regarding safety on site shall be displayed throughout the construction site				
7	Technical and construction-related questions as well as addressing any quality issues related to expected works are to be directed to the Supervising Engineer for resolution; and final technical decision.				
8	Supervising Engineer and the Client require regular photo report of work conducted to date. These photo reports will be used to track progress against the agreed upon Scope of Work and Bill of Quantities documents for the project				
PROSPECTS SUDAN: Preliminaries BOQ					
Item	Description	Unit	Qty.	Unit Cost SDG	Total Cost SDG
1	Preliminaries / Site Prep				
1-1	Site Preparation: This site will need to be cleared of all rubbish, bushes, and materials. Remove any obstacles to the safe access of construction workers is also to be planned for; including any buried materials that will interfere with the establishment of the various civil works. All initial site preparation, clean-up and removal of materials to be conducted to the instructions of the site manager and the approval of the Supervising Engineer.	Lump Sum	1.00		
1-2	Electrical, Water supply and Running cost: The Contractor shall establish and commission an adequate temporary electrical and water supply for the works, suitable for all purposes, until handing over and shall pay all charges for all electrical and water consumption. Including any necessary cables, generators, MDBs, water pumps, water storage tanks, distribution pipe network, etc. required for the execution of the works. Running costs, price includes; Power & services, water, documents, photos, records, and Client meetings on site.	Lump Sum	1.00		
1-3	Sign Boards: The Contractor shall establish and maintain One (1) sign boards for the Site (1.5 m width X 2m height), total height of sign board is 3 m, consisting of painted galvanized steel board plate, steel tubular section, steel angles, all painted with two coats white oil paint back and front and supported above the ground with steel framing and struts painted matt black and set into the ground and fixed in concrete foundation size (10 x 10 x 10). The sign board shall be lettered by a skilled sign writer in Arabic and English and shall include: The Project details, specific mention of The ILO and the Ministry of Foreign affairs for the Kingdom of Netherlands, Implementing partner, and Contractor's Name. Large scale layouts are to be submitted to the Supervising Engineer for approval before manufacture. No advertising material other than this will be permitted. No other sign boards or advertisements on or around the site will be permitted unless approved by the Supervising Engineer.	Lump Sum	1.00		
1-4	Cleaning the Works: Immediately prior to handing over the Works the Contractor shall thoroughly clean all project site area, remove material and generally keep the area ready for operation and use all to the approval of the Supervising Engineer.	Lump Sum	1.00		
1-5	Temporary Sanitary Facilities: The contractor shall establish basic worksite services including all temporary separate sanitary facilities for men and women that are sufficient in number and conveniently and safely located (mobile sanitary facilities could be considered).	Lump Sum	1.00		
1-6	PPE & OSH: The contractor should design and install all worksite safety and personal protective equipment requirements signage. In addition to all work and occupational safety signs all around the site. Safety and Health provision, traffic barriers at site limit, safety gears for all laborers , proper tools and PPEs (including COVID-19 prevention measures). Safety equipment, hazard & traffic management, safe-working requirements, health/safety records & analysis, supervision & training, induction, protective clothing; & the like; Site bins and cleaning.	Lump Sum	1.00		
1-7	Insurance payment: The contractor should provide and pay for accident and liability: workman's compensation, Liability insurance and third party. This amount will be paid to the contractor upon submission of payment receipt to the relevant authorities.	Lump Sum	1.00		
1-8	Materials Storage and Site office: The Contractor shall provide and maintain temporary storage and site office made of zink sheets and steel pipes fixed on reinforced concrete slab and use it as materials storage (cement and other perishable materials and the like) and site office for regular meetings. Contractor should also provide chairs and tables for regular site meetings.	Lump Sum	1.00		
1-9	Shop Drawings: The Contractor shall provide at any time before commencement or during the progress of the work shop drawings as directed by the Supervising Engineer. Shop drawings should also be provided for activities related with assembly such as water tank installation, solar system installation, and generator anchoring.		NOTE		
1-10	As-Built Drawings: The Contractor shall carry out the correction of all prints of Drawings including the preparation on completion of the Works. One softcopy (CD or DVD) and One colour printed of As-Built Drawings		NOTE		
1-11	Samples: The Contractor shall allow for providing and submitting to the Supervising Engineer as he may require, samples of all materials and goods which the Contractor proposes to incorporate into the works		NOTE		
1-12	Site Visit: All Contractors/bidders are strongly advised to visit the prosped sites prior to pricing and submitting bid offers. Contractors/bidders shall coordinate with the Client and Supervising Engineer to obtain infromation about the locations/coordinates of the proposed sites and arrange at their own costs site visits to determine the conditions of the water boreholes facilities, rehabilitation needed, material storage area and material delivery arrangements. Contractors/bidders are solely responsible for that and no price increase shall be made later on during the project period in case of their failure of doing so.		NOTE		
1-13	All items identified as (NOTE) are included for clarification purposes and should not be priced, price should be included in the related items.		NOTE		
1-14	Complete Project Price: This BOQ is part of the complete project documents (drawings, BOQ, and materials specifications and notes on pricing) and must be read together. Any discrepancies between these documents shall be brought to the immediate attention of the Supervising Engineer. Prices given by the contractor on this BOQ are to cover any and all additional materials, labour or associated costs to complete the works as documented on the complete project documents.		NOTE		
Sub-Total SDG					SDG
Sub-Total USD					\$0

Technical design and monitoring for the ILO's Employment Intensive Investment Programme (EIIP) Infrastructure Projects in Kassala					
Construction of 50 Shelters at Shagarab- Cost estimate					
SNO	Description	UNIT	Quantity	Rate USD	Amount USD
1	shelter materials cost :				
1.1	Supply American Galvanized Iron Sheet 6 m length, 24 mm thickness	No.	8		0
1.2	Thermal insulating strips	Roll	1.5		
1.3	supply American Galvanized Iron Sheet, 6 m length, 24 mm thickness for Ridgecap	No.	1		0
1.4	wooden purlins 40*80 mm, 4 m length	No.	16		0
1.5	Wooden main members main 100*50 mm top & Middle 4m length	No.	8		0
1.6	Supply Rectangular steel pipe - WallPlate 8*4 cm to bended to the wall with hoop iron	L.M	26		0
1.7	Supply mud for Mud Brick wall	m3	13.9		0
1.8	Supply Nails 3 inch for plastering	Kg	4		0
1.9	Supply Portland cement for plastering wall inside and outside	NO.	5		0
1.1	Supply steel Wire for plastering	Kg	10		0
1.11	Supply sand for plastering wall inside and outside	m3	4		0
1.12	Supply Timber and CGI sheet DoorLockable internally/externally 2000mmx900mm wide	NO.	2		0
1.13	Supply 900mmx900mm Timber & CGI sheet window,including insect mesh	NO.	4		0
1.14	Glue for plastering	Kg	5		0
1.15	Supply mud for internal Backfilling 10 cm above the ground to raise the ground for flood protection	m3	2.8		0
1.16	Supply compacted improved soil	m3	2		0
1.17	Provision of water for Mud Brick manufacturing and plastering	Job	1		0
1.18	Supply 2 PVC pipe 4 inch and plastic barrel 200 liters for water harvesting	Job	1		0
<u>Estimated pilot shelter materials Cost for 1 pilot shelter</u>					<u>0</u>
2	Labor Cost:				
2.1	Kneading mud and pouring into mold to make bricks	Job/one shelter	1		0
2.3	Build mud brick walls 26 L.M * 2,25 m height in addition to the foundation brick of height 20 cm.	Job/one shelter	1		0
2.4	floor Backfilling	Job/one shelter	1		0
2.5	Internal and external plastering	Job/one shelter	1		0
2.6	installing of 2 Doors & 4 windows	Job/one shelter	1		0
2.7	roof work (fixing hoop iron for the top Rectangular pipe, Cutting and fitting wooden roof beams & purlins and installation of zinc sheets)	Job/one shelter	1		0
<u>Labor Cost for 1 pilot shelter</u>					<u>0</u>
<u>Total Budget for 1 pilot shelter materials + Labor Cost for 1 pilot shelter</u>					<u>0</u>
<u>Total Cost for 50 Shelters - USD</u>					<u>0</u>

Total Cost of BOQs		
#	Description	Cost USD
1	Preliminaries	0
2	construction of 50 Shelters	0
	<u>TotalCost for construction of 50 Shelters(USD)</u>	<u>0</u>